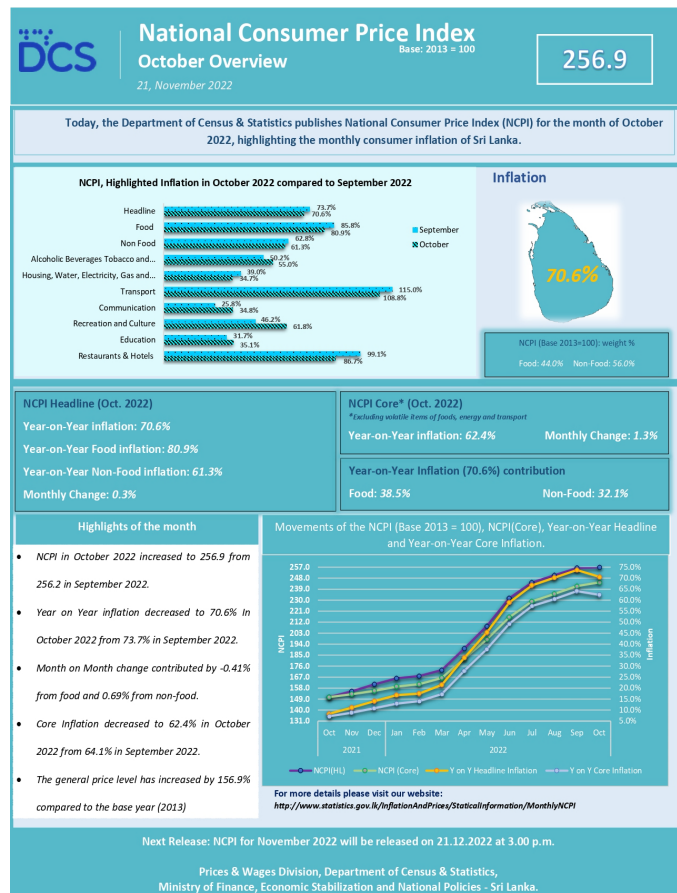


### Situational Update:

- Sri Lanka's Economic crisis is deteriorating and pushing millions to the edge. The estimated population facing acute food insecurity has increased to 37 percent of the total population (one-third of the total population) as of September 2022 (WFP).<sup>i</sup>
- Due to countless contributing factors such as poor governance, degrading fiscal and economic affairs, and heightening geopolitics in the region, Sri Lanka is currently experiencing a downward spiral bringing forth negative outcomes severely affecting multiple dimensions of social protection and welfare. Among such, Food insecurity stands as the paramount issue at hand. Apart from that tensions with law enforcement agencies and protesting parties are on the rise. There is a looming threat to freedom of expression and freedom of assembly.
- Inflation is at an all-time high and increasing rapidly resulting in high levels of food insecurity due to conscious decreasing food consumption as a coping mechanism to save money that the household level.
- The crisis is already threatening the livelihoods of people and anxiety related to job insecurity is heightening. There is also a rapid wave of employment-based migration at all social strata and

- According to the National Consumer Price Index<sup>ii</sup> (NCPI Headline) Year-on-year inflation stands at 70.6 percent with a monthly change of 0.3 percent.
- Year-on-year Food inflation stands at 80.9 percent whereas non-food inflation stands at 61.3 percent (Oct 2022, NCPI).
- The general price level has increased by 156.9 percent compared to the base year 2013. The prices of essential supplies, medication, and other basic requirements such as LPG and fuel increase briskly amidst severe shortages. The economic downturn is affecting stark challenges in both micro and macro-economic spheres.
- The pressures are affecting the social, economic, and political compasses of public life and affecting unrest among people. The outcomes are heavily felt by the most marginalized, disadvantaged, and non-affluent populations based mostly in urban areas, rural pockets as well as in the plantation sectors.



## Sarvodaya National Response to the Humanitarian Crisis: We Are One



- Sarvodaya's national initiative- We Are One was launched in April 2022 and consists of a multi-pronged response to ensure food security at the community level and to act as a social SafetyNet. Sarvodaya's goal is to support 500,000 families from April 2022 to 2023.
- Identified Key Beneficiary groups consist of families with primary school children, pregnant and lactating mothers, disabled, widowed, senior citizens, medically challenged and families with complex difficulties based at identified marginalised and low-income communities.
- Food-related support will be delivered mainly through the Food Banks and Community Kitchens programme. Home and community gardening is promoted as an activity for children and communities to come together as a recreational and psychosocial support activity. Sarvodaya's Public Health initiative Suwodaya will also contribute in terms of medical crisis response. Apart from that Sarvodaya intends to contribute to livelihood development in the long run by creating a support system to uplift micro-entrepreneurs and small businesses.
- Sarvodaya partners with bilateral donors, UN agencies, Corporates, Social Enterprises, and well-wishers to sustain the WeAreOne national campaign.
- In terms of national policy formulation and planning, Sarvodaya partnered with the [United Nations-Sri Lanka Joint Humanitarian Needs and Priorities \(HNP\) Plan](#) as a participating organisation for implementation along with other major Non-Governmental Organisations which calls for US\$47.2 million to provide life-saving assistance to 1.7 million people severely hit by the economic crisis.
- The HNP support programme will run over a period of four months from June to September 2022. The HNP is a direct response by the UN-backed multi-sector international assistance mechanism to the immediate and urgent needs arising from the current multifaceted crisis with a special focus on healthcare and essential medicine, agriculture, food and nutrition, emergency livelihood support as well as protection.

### Community Food Banks (CFB)



The twenty-five Sarvodaya District Centres throughout the Island actively operate as Community Food Banks (CFB). The District Centres function as the key focal points to identify needs as well as to deliver relief to the diverse pool of beneficiaries. The CFB will have a dual purpose, *i.e.*, to function as a donation-receiving centre as well as to function as a re-distribution centre for families that require essential supplies. Under the CFB drive, a diverse pool of Partners contributes in different modes to sustain the programme.

**Manudam Mehewara** is a corporate partnership to fulfil the nutritional needs of a selected pool of beneficiaries. Sarvodaya Shramadana Society members who are below the poverty line are carefully filtered and selected as beneficiaries and they typically come from low-income backgrounds – with a special focus on women-headed families, persons with disabilities, daily paid workers, families without fixed income, and small/micro businesses.



**114,648 Families**



**Ration packs worth LKR 2500/-  
Total LKR 286.6 MN**

### WeAreOne: Manduam Mehewara Ration Pack Distribution

S/N	District	Distribution Summary - Monthly Wise (April to September - 2022)						Total
		April	May	June	July	August	September	
1	Ampara	400	1200	1600	2061	0	0	5261
2	Anuradhapura	558	1167	929	673	139	400	3866
3	Badulla	500	1100	865	1275	0	23	3763
4	Batticaloa	300	1300	350	200	1140	150	3440
5	Colombo	506	1095	250	3607	1791	3406	10655
6	Galle	350	1250	310	824	0	0	2734
7	Gampaha	532	1068	1587	1734	87	281	5289
8	Hambantota	250	1343	507	509	191	499	3299
9	Jaffna	500	1100	3055	2572	0	773	8000
10	Kalutara	300	1300	600	1350	380	363	4293
11	Kandy	304	1296	1197	1695	439	1171	6102
12	Kegalle	350	1250	550	953	413	95	3611
13	Killinochchi	250	1350	600	888	0	500	3588
14	Kurunegala	350	1250	1600	1043	30	0	4273
15	Mannar	300	1300	250	883	0	0	2733
16	Matale	400	1200	1800	915	0	85	4400
17	Matara	298	1302	400	855	0	145	3000
18	Monaragala	460	1140	1300	2050	0	0	4950
19	Mullaitivu	350	1250	245	1042	0	0	2887
20	Nuwara Eliya	360	1240	1969	2550	0	0	6119
21	Polonnaruwa	345	1255	103	1704	0	101	3508
22	Puttalam	300	1300	667	955	0	1	3223
23	Ratnapura	466	1134	849	640	0	534	3623
24	Trincomalee	400	1200	2036	4364	0	0	8000
25	Vavuniya	450	1150	643	1788	0	0	4031
#	<b>Total</b>	<b>9579</b>	<b>30540</b>	<b>24262</b>	<b>37130</b>	<b>4610</b>	<b>8527</b>	<b>114,648</b>

### Sarvodaya District Centre-Based Community Food Banks

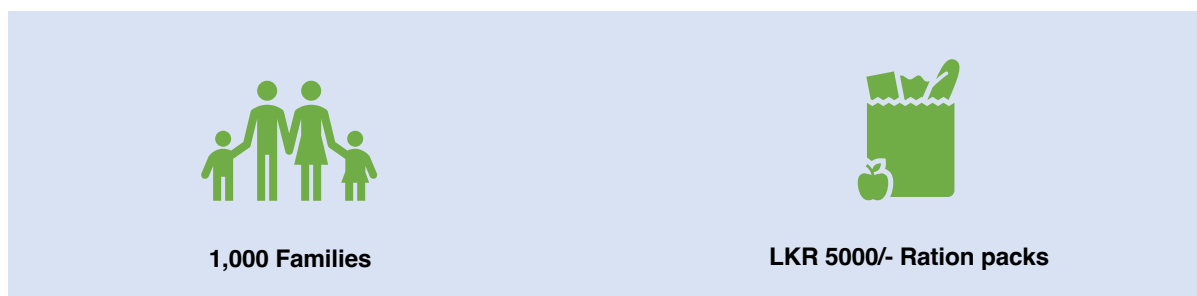


**452 Families Received Relief**



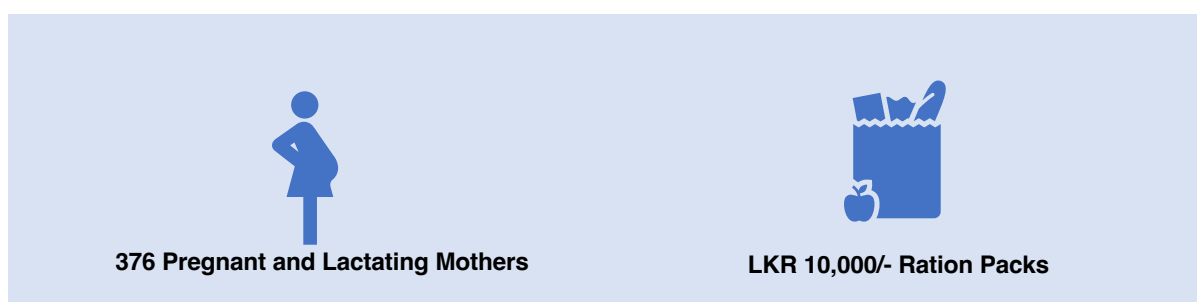
**25 District Centre-Based Food Banks**

**Kimbula Kithul** is a social enterprise which is a women-powered small-holder farmer supporting agri-food start-up that reaches out to the world from Sri Lanka joined hands with Sarvodaya to fundraise for the 'Feed for Luv Sri Lanka initiative' as part of the We Are One Campaign. They tapped into their network of restaurateurs – and their global clientele and friends of the Sri Lanka Diaspora to raise funds. The project will continue in the months to come. Initially, the beneficiary pool was targeted to be Primary School Children (distribution vis Schools) to supplement and assist their nutritional upkeep. However, due to prolonged school closures, the beneficiary pool was expanded to assist selected groups from the Export Processing Zone (EPZ) in partnership with Dabindu Collective and the Shramabimani Kendraya two organisations that are dedicated to the welfare of women and other labourers working in the EPZ.



### Friends of the World Bank Group

The Staff of the World Bank Group reached out to Sarvodaya to offer their independent and voluntary support. They choose to fundraise among their private circles and to raise funds as a primary response to the crisis. The priority group identified were pregnant and lactating mothers with children under five years of age and they were identified through the Government Medical Officer of Health (MOH) system. The target is to reach out to at least 3,000 beneficiaries in five districts, i.e., Jaffna, Nuwaraeliya, Badulla, Batticaloa, and Monaragala. The initial target (Phase 01) for the campaign is USD 30,000. This fundraiser is led and monitored by the staff in the Colombo office of the WBG on the GoFundMe Platform and is a voluntary effort. This Initiative is not part of the organization's regular operations.



### Community Kitchens



Sarvodaya Community Kitchens currently operate under three categories i.e., Pre-Schools & Primary Schools, and Urban Community based. Hot meals are prepared and served on-site while encouraging community pooling of resources and labour (Shramadana) required to prepare and serve meals. In most places, Co, communities themselves took the owners to set up kitchens out of scratch which was an encouraging sign of self-help in practice.

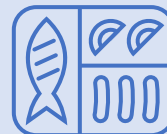
## Pre-School, Child Development Centre & Primary School based Community Kitchens

The programme is rolled out in 141 Pre-Schools and Child Development Centres based in Rural, Plantation and Urban Sectors and is open to any child in their respective residing communities.



Over 6,687 Pre-Schoolers

Over 2,038 Primary School Children



533,233 Hot Meals Served

## Urban Community Kitchens

In partnership with Singularity, Sri Lanka Sarvodaya conducted 38 Community Kitchens in the urban heartland of Colombo in three selected communities. Hot meals are prepared by selected community members after a simple onboarding procedure and served to the community. The community themselves bring in the labour required as well as pool resources as and when they could. The project is partly funded by Sarvodaya according to requirements and to encourage the ambience of self-help.



38 Urban Community Kitchens



52,800 Meals Served  
LKR 6.9 MIL

## Home & Community Gardening (HCG)



In partnership with environmental sustainability initiatives and organisations, Sarvodaya promotes home and community gardening in urban, semi-urban and rural community settings. HCG initiative targets to promote home and community-based food production with a greater emphasis on psycho-social well-being boosting community conferences, inspiring children in times of crisis and bringing about a sense of bringing responsibility and resilience to face the challenges brought forward by the crisis. Sarvodaya sponsors part of the seeds

and saplings required to initiate the programme while requesting communities to contribute to the initiative in their capacities.



400 Home Gardens

Mannar, Trincomalee, Batticaloa, Matale, Kandy, NuwaraEliya, Badulla Districts



## Suwodaya: Public Health Initiative



In alignment with Sarvodaya's Public Health mandate (Suwodaya), Sarvodaya has been providing first aid and medical care at the Galle Face Green with a team of committed Volunteer Doctors since the inception of the People protests in 2022. Sarvodaya partnered with Humanitarian Organisations such as the Sri Lanka Red Cross, the St John's Ambulance Service, Volunteer Doctors, and Volunteer Counsellors to expand services. Apart from first aid and medical care, a psychological first aid team provided services to those who required psychological interventions (first-aid approach) at the Galle Face Green Site. The Medical Camp was sustained for over 100 days.

*Collectively with our partners we have:*



## Livelihood Development Programmes

### Sabrina Yusuf Entrepreneurship Development Project

Expolanka partnered with Sarvodaya Movement to launch the Sabrina Yusoof Women's Empowerment Initiative to re-establish a new generation of Micro and Small Medium Enterprises (MSEs) with skills to obtain grassroots-level socio-economic development among marginalized and vulnerable segments of society. The primary aim of this initiative was to fund low-income female entrepreneurs to establish and enhance their business ventures especially when their businesses are largely affected due to the post-pandemic economic crisis. Currently, the programme is rolled out in the Colombo District and operates in Homagama, Kaduwela, Kolonnawa, Colombo, and Moratuwa divisional secretariat areas with 30 beneficiaries for the Phase I pilot run. In the second phase, the initiative will be rolled out in other secretarial divisions in the Colombo District with more than 100 entrepreneurs onboard.



SYWEI entrepreneurs represent different sectors such as Food & Beverages, Apparel, Horticulture, Ornamental Fish, Cleaning Materials, Beauty Care, Handicrafts, Footwear and more. Enabling more Sri Lankan women to gain financial independence, by generating their own stable, sustainable income is the expected result of Sabrina Yusoof Women's Empowerment Initiative.

## Policy Engagements Related to the Current Humanitarian Crisis in Sri Lanka by the Hon. President and Officials

No	Date	Title	Organizer
01	02.04.2022	SLMA Congress on Communication in Health Care	SLMA
02	07.04.2022	Delivered a speech on “Planetary Health: Public Health Perspective” at World Health Day Celebrations 2022	SLMA
03	18.05.2022	Discussion on enhancing governance	March12
04	19.05.2022	Discussion on social activism and political influences in creating policy agendas	PGIM (Virtual)
05	24.05.2022	“Role of Sarvodaya during the pandemic” interviewed by IHP	IHP
06	23.06.2022	Meeting with Mr. Chiyo Kanda, Country Manager for Maldives and Sri Lanka South Asia Region – World Bank Discussed matters : current economic crisis	World Bank
07	28.06.2022	Virtual meeting with ADB staff on current economic crisis	ADB Sri Lanka
08	29.06.2022	Meeting with Civil Society Organizations on current crisis	Centre for Poverty Analysis
09	30.06.2022	Interview - A study on vulnerability and Covid 19. The study was aimed to understand how the pandemic has impacted existing vulnerable populations, how it may have created new vulnerabilities and the role of social protection measures in responding to the pandemic.	International Centre for Ethnic Studies
10	22.07.2022	Delivered a Guest Lecture on “Sarvodaya Shramadana Movement and the Response to Current National Crisis.” At the International Open University Research Sessions.	Open University Sri Lanka (Virtual)
11	17.08.2022	Regional Meeting on International Health Regulations(IHR) & Evaluation Framework Tools : Global Developments & Regional Experiences & Linkages	World Health Organisation (Virtual)
12	18.08.2022	Discussion with Mr. David Mclachlan-Karr the Regional Director for Asia-Pacific UN Development Cooperation Office. Mr. Mclachlan-Karr oversees the Resident Coordinator System and UN country teams for the Asia-Pacific.  Discussed Matters - current Sri Lankan country context in relation to the development, economic and human rights challenges”	United Nations Sri Lanka
13	24.08.2022	Meeting with Mr. George Laryea-Adjei, Regional Director, South Asia, UNICEF Discussed Matters : Current situation in Sri Lanka and the crisis	UNICEF
14	26.08.2022	Delivered a lecture on "Health and nutrition problems faced by the community and how can people find solutions	Sanasa International

		to manage the impending issues" at People's Economic Forum 2022	
15	29.08.2022	Meeting with Mr. Gabriel Grau, USAID/Sri Lanka and Maldives Mission Director and Deputy Mission Director Ms. Debra Mosel  Discussed Matters : Current operating environment for civil society organizations in Sri Lanka, and further needs to support civil society's public advocacy and service.	USAID/Sri Lanka
16	01.09.2022	Meeting with Japanese Ambassador Discussed Matters : IMF, SLCC, NGO Secretariat, Political Alterations and Financial Crisis	Japanese Embassy
17	01.09.2022	Participated in a special event called "Thank you India" which organized with the intention of showing gratitude for the lifeline India offered to Sri Lanka at a time when the country was confronted with problems that had never been faced by the country since independence. Gopal Baglay, the High Commissioner for India in Sri Lanka, honoured the event with his presence. Dr.Vinya was one of the speakers joined with Ven Dr Kosgoda Sri Subhuthi Anunayake Thero, Ven Dr M Wimalasara Thero, Prof. Mallawa Handy Jagath Ravindra, Mrs Kimarli Fernando, Mrs Nayomini R Weerasooriya, Mr. Naveen Gunaratna, Mr. Mahen Amarasuriya, and Mr. Balraj Ravindran.	Indian High Commission
18	13.09.2022	Dr.Vinya had the opportunity to meet Ms. Samantha Power, Administrator of United States Agency for International Development (USAID) during her visit to Sri Lanka. USAID has been a key development partner for Sarvodaya and Civil Society Organizations in Sri Lanka for over 4 decades. There was an open dialogue on development and governance issues. US Ambassador in Sri Lanka HE Julie J. Chung, Gabriel Grau, USAID Mission Director in Sri Lanka, Mr. Rohana Hettiarachchi, Executive Director of Paffrel and Mr. Gowthaman Balachandran were present at the meeting.	USAID
19	27.09.2022	IMF World Bank Annual Meeting	IMF World Bank

## TV Interviews

No	Date/Time	Content of the Program	TV Channel
01	04.04.2022 10.00 am	කොවිඩ් බලපෑමෙන් සහ වත්මන් සමාජය අර් බුදයෙන් නෙහිසිටීමට ශක්තිමත් වෙමු  ආදරනීය ජීවිතය Program	Siyatha TV
02	18.07.2022	Suwodaya Program	Life TV



03	24.08.2022	"ප්‍රජා සෞඛ්‍ය අභියෝග සහ විසඳුම්" - හරිත TV LET'S TALK	Haritha TV
04	12.09.2022	TV Show - "අක්ෂරය" රූපවාහිනී නාලිකාවේ (PEO TV Channel 122) "Future Map" උදෑසන සජීවී වැඩසටහනට එක් වෙමින් ශ්‍රී ලංකාවේ ආහාර සුරක්ෂිතතාවය සහ පෝෂණය පිළිබඳ සජීවී සංවාදය.	Peo TV channel
05	28.09.2022	Real Voice Program  මෙම වැඩසටහන බිම්මටමින් සිවිල් සමාජ සංවිධානවල කාර්යභාරය විග්‍රහයට ලක්කිරීම අරමුණු කරගනිමින් නිපදවන ලද්දකි. සර්වෝදය සංගමයේ සභාපති, වෛද්‍ය වින්යා ආරියරත්න. මහතා සහ උච්ච ශක්ති පදනමේ ප්‍රධාන විධායක නිලධාරී නඩේෂන් සුරේෂ් මහතාගේ සහභාගිත්වයෙන් කොවිඩ් වංසගතය සහ අනෙකුත් ආපදා තත්ත්වයන් හමුවේ සිවිල් සමාජයේ සාමූහික වගකීම පිළිබඳව මෙම වැඩසටහන මගින් සාකච්ඡා කරනු ලබයි. මෙම සාකච්ඡාවලදී වැඩසටහන මාධ්‍යවේදී නාරද බක්ච්චුව විසින් මෙහෙයවනු ලබයි.	Rupavahini

## Overseas Visits

No	Date	Purpose of Visit	Country	Organizer
01	29.04.2022	Sarvodaya USA Board Meeting	USA	USA Sarvodaya
02	7 <sup>th</sup> -10 <sup>th</sup> May 2022	South Asia Regional Strategic Faith Engagement Forum in Kathmandu	Nepal	UNICEF
03	2 <sup>nd</sup> -4 <sup>th</sup> August 2022	WHO Regional Consultation to develop Strategic Framework on Social Determinants of Health Actions in South-East Asia (2023-2030)	India	WHO
04	24.09.2022	Participated in "The Ethical Framework Summit" at the American Geophysical Union (AGU) Conference Center, Washington D.C. The meeting was convened by AGU as part of a consultation process to develop an ethical framework for climate intervention research. Leading scientists, academics and other professionals representing a wide range of fields took part in the meeting.	USA	AGU

## Virtual Engagements

No	Date	Title	Organizer
01	25.05.2022	Community Participation for Agriculture	Department of Manpower and Employment
02	31.07.2022	Poverty, Unemployment and Social security systems: The compelling challenges in the face of resistance (In Sinhala)	Rebuild Sri Lanka Think Tank
03	13.08.2022	Harvard Spotlight on Sri Lanka's Ongoing Humanitarian Crisis: Challenges & Adaptive Solutions	Harvard University
04	19.08.2022	Our Role in Rebuilding Sri Lanka (Rotary Membership Talk Show)	Rotary Club
05	27.08.2022	Sri Lankan Crisis: Can IMF and World Bank save the Nation?	PHM
06	20.09.2022	Webinar on "Crisis in Sri Lanka"  Dr.Vinya had the discussion with Ms. Mandana Ismail Abeywickrema (journalist and activist), Dr. Indrajit Coomaraswamy (former governor of the Central Bank), Prof. Sumathy Sivamohan (University of Peradeniya) and the webinar was moderated by Dr. David Page, Senior Research Fellow of ICWS.	Institute of Commonwealth Studies, School of Advanced Study, University of London

## We Are One's contribution to the Sustainable Development Goals (SDG)



## ANNEXURES:

### PROJECT FUND STATUS AS OF 17 OCTOBER 2022

<b>Projects Funds</b>			
<b>up to 17th October 2022</b>			
<b>Project</b>	<b>Fund Received Rs.</b>	<b>Expenses Rs.</b>	<b>Balance Rs.</b>
<b>Community Kitchens Fund</b>	8,553,928.23	8,349,189.00	204,739.23
<b>We are One Fund</b>	19,242,328.63	2,669,862.48	16,572,466.15
<b>Kimbula Kithul Fund</b>	8,419,035.10	7,959,243.00	459,792.10
<b>Total</b>	36,215,291.96	18,978,294.48	17,236,997.48

ii <https://reliefweb.int/report/sri-lanka/wfp-sri-lanka-situation-report-26-september-2022>

ii <http://www.statistics.gov.lk/InflationAndPrices/StaticInformation/MonthlyNCPI/NCPIInfo2022E>