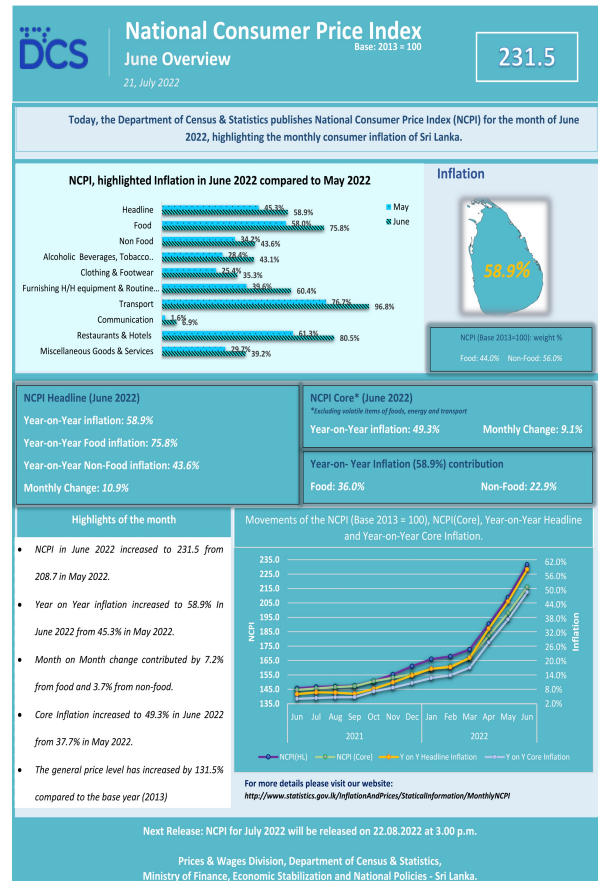


### Situational Update:

- Sri Lanka's Economic crisis is deteriorating and pushing millions to the edge. The estimated population facing food insecurity has climbed to 22 percent of the total population by June 2022 (WFP).
- Due to countless contributing factors such as poor governance, degrading fiscal and economic affairs, heightening geopolitics in the region, Sri Lanka is currently experiencing a downward spiral bringing forth negative outcomes severely affecting multiple dimensions of social protection and welfare.
- The pandemic has already highlighted gaps in the current Social Protection and Welfare systems also bringing about fresh and complex series of challenges.
- Inflation is increasing rapidly and is resulting high levels of food insecurity due to conscious decrease of food consumption to save money at household level. A recently conducted UNICEF survey (2021) notes that 'Loss of income or lowering of income is compensated by reducing food intake at household level' and this has a direct impact especially on the country's population of children particularly from marginalized populations.
- According to the National Consumer Price Index<sup>1</sup> Year-on-year inflation stands at **58.9** percent. Food inflation (y-o-y) stands at **75.8** percent where non-food inflation stands at **43.6** percent (June 2022, NCPI). The general price level has increased by **131.5** percent compared to the base year 2013. The prices of essential supplies, medication, and other basic requirements such as LPG and fuel increase briskly amidst severe shortages. The economic downturn is affecting severe challenges at both micro and macro-economic spheres.



- The pressures are affecting the social, economic, and political spheres of public life and unrest among people. The effects are heavily felt by the most marginalized, disadvantaged, and non-affluent populations based mostly in urban areas as well as in rural pockets as well as in the estate sector.
- Sri Lankan Youth have responded to this crisis through a peaceful, non-violent series of protests popularly referred to as the 'Aragalaya', which led to several political outcomes and its climax being the resignation of the Executive President, Mr Gotabaya Rajapakse. This had been the key and unanimous demand of the youth and the non-violent protestors.



- Sarvodaya's national initiative- We Are One was launched in April and consists of a multi-pronged response to ensure food security at community level. It targets to support 500,000 families during the period April 22-2023.
- Key Beneficiary groups consists of families with primary school children, pregnant and lactating mothers, disabled, widowed, senior citizens, medically challenged and families with complex difficulties based at identified marginalised and low-income communities.
- Support will be delivered mainly through the Food Banks and Community Kitchens programme. Home and community gardening is promoted as a sustainable activity. Sarvodaya's Public Health initiative 'Suwodaya' which was the precursor to the COVID-19 emergency response will be extended to provide Health related interventions at the community level.
- Sarvodaya already partners with corporates, social enterprises as well as other donors be them organisations or individuals generously supporting the activities of the We Are One initiative.
- In terms of national policy formulation and planning, Sarvodaya partnered with the [United Nations-Sri Lanka Joint Humanitarian Needs and Priorities \(HNP\) Plan](#) as a participating organisation for implementation along with other major Non-Governmental Organisations which calls for US\$47.2 million to provide life-saving assistance to 1.7 million people severely hit by the economic crisis.
- The HNP support programme will run over a period of four-months from June to September 2022. The HNP is a direct response by the UN backed multi-sector international assistance mechanism to the immediate and urgent needs arising from the current multifaceted crisis with a special focus on healthcare and essential medicine, agriculture, food and nutrition, emergency livelihood support as well as protection.



### Community Food Banks:

The twenty-five Sarvodaya District Centres throughout the Island actively operate as Community Food Banks (CFB). The District Centres function as the key focal points to identify needs as well as to deliver relief to the diverse pool of beneficiaries. The CFB will have a dual purpose, i.e., to function as a donation receiving centre as well as to function as a re-distribution centre for families that require essential supplies. Under the CFB drive a diverse pool of Partners contribute in different modes to operationalise the programme and has their unique approach and standards to deliver.

The CFB:

- Maintains dry ration stocks (receivables) as well as coordinating donation of supplies.
- Provisions food assistance for those who are in dire need.
- Stand as a model that could be replicated at the community/village level and to inspire positive social action.

**Manudam Mehewara** is a corporate partnership to fulfil nutritional needs of a selected pool of beneficiaries. It targets Low Income Families – with a special focus on women-headed families, persons with disabilities, daily paid workers, families without fixed income, small/micro businesses. Sarvodaya Shramadana Society members who are below the poverty line are carefully filtered and selected as beneficiaries.



100,179 Families



Ration packs worth LKR 2500/-  
LKR 250.4Mn

**Feed for Luv Sri Lanka** is a partnership with Kimbula Kithul, a social enterprise which is women-powered, small-holder farmer supporting agri-food start up that reaches out to the world from Sri Lanka and is part of the We Are One Campaign . They tapped into their network of restaurateurs – and their global clientele and friends of the Sri Lanka Diaspora to raise funds. The project will continue in the months to come.



Initially the beneficiary pool was targeted to be Primary School Children (distribution vis Schools) to supplement and assist their nutritional upkeep. However, due to prolonged school closures the beneficiary pool was expanded to assist selected groups from the Export Processing Zone (EPZ) in partnership with Dabindu Collective and the Shramabimani Kendraya two organisations that are dedicated for the welfare of women and other labourers working in the EPZ.



1000Families



Ration packs worth LKR 5000/-  
LKR 5 MN.

## Community Kitchens:



Sarvodaya Community Kitchens currently operate under two categories i.e., Pre-Schools based, and Community based (Urban). Hot meals are prepared and served on-site at each respective venues, while encouraging community pooling of resources and labour required to prepare and to serve meals. In some instances, communities gathered to erect places out of scratch positively embracing the ideas of the initiative.

### Pre-School Community Kitchens

- The national- school meal programme is currently halted due to budgetary constraints hence the Pre-Schools based community kitchen programmes supplements the nutritional requirement of pre-schoolers.
- Backed by clinical nutritional research and data, the pool of beneficiaries has been selected.
- 110 Pre-Schools selected for this task after an initial assessment and with plans to expand to other areas after careful consideration.



**5,453 Pre-Schoolers**  
**110 Pre-Schools**  
**08 Districts**



**Over 330,000 hot meals served**

### Community Kitchens (Urban Communities)

In partnership with [Singularity Sri Lanka](#) Sarvodaya conducted 12 Community Kitchens in the urban heartland of Colombo in three selected communities. Hot meals are prepared by selected community members after a simple onboarding procedure and then hot meals served to the community. The community themselves bring in the labour required as well as pool resources as and when they could. The project is part funded by Sarvodaya according to requirement and to encourage self-help.



**15,800 meals served**  
**12 Community Kitchens**



**LKR2.23 Mn**

## Home & Community Gardening (HCG)



In partnership with eco-initiatives Sarvodaya promoted home and community gardening in urban, sub-urban and rural settings. This initiative targets at yielding short, mid, and long-term outcomes of food-tree planting and to bring about a sense of community fellowship while educating school children on the importance of food security. The tree planting project will not only function as a mere activity but also one that would boost the community confidence as well as inspiring children in times of crisis and to bring about a sense of communal responsibility and celebration opening their minds to look beyond the crisis and to prepare them for a resilient future. Part of the plants and seeds will be sponsored and supplied by Sarvodaya to initiate the programme while requesting communities to contribute to the programme in their own capacities, i.e., saplings, seeds, labour to run community gardens etc.



400 Home Gardens



LKR 160,000

## Suwodaya: Awakening Wellbeing



In alignment with our Public Health mandate (Suwodaya-the signature COVID-19 emergency response programme of Sarvodaya), Sarvodaya has been providing first aid and medical care at the Galle Face Green with a team of

committed volunteer Doctors since the inception of the peoples protests 2022. Since then, our services have been expanded as we have partnered with other Humanitarian Organisations such as the Sri Lanka Red Cross and the St John's Ambulance Service, volunteer Doctors, and volunteer Counsellors. Apart from first aid and medical care, our psychological first aid team provided services to those who require psychological interventions (first-aid approach) at the Galle Face Green Site.

Collectively with other Partners we estimate that we have:



Treated over 20,000 patients



Over 40 Doctors  
Over 50 First Aiders  
Over 20 Humanitarians



Over 1500 Ambulance Turns

Financial Summary

**Fund Schedule 1st April - 31<sup>st</sup> July 2022**

<i>Income</i>		Rs.	Rs.
1. Individual Donation			
	We are One	2,209,117.88	
	Perera & Sons	1,000,000.00	
	Rev. Chante Mahinda Thero	246,560.00	
	Medical Support	227,000.00	3,682,677.88
2. Institutional Donation			
	Sarvodaya USA	4,879,866.13	
	Kibula Kithul- Individual & Sarvodaya USA	8,419,035.10	
	Singularity Sri Lanka	3,418,903.63	
	Buddhist Global Relief	1,249,325.00	
	Facebook	31,113,882.50	
	UNICEF -Suwodaya	10,355,300.00	
	Meta Foundation	1,794,700.00	
	The British Asia	6,949,700.00	
	Helping Sri Lanka Christchurch	311,049.86	68,491,762.22
3. Manudam Mehewara		276,633,935.00	276,633,935.00
	<b>Total Income</b>		<b>348,808,375.10</b>
<i>Expenses</i>			
	Community Kitchen	27,234,629.90	
	Food Bank - Dry Ration	12,039,143.00	
	Home Garden	863,156.00	
	Medical Equipment	299,900.00	
	Manudam Mehewara	253,467,500.00	293,904,328.90
<b>Balance</b>			<b>54,904,046.20</b>

---

<sup>i</sup> <http://www.statistics.gov.lk/InflationAndPrices/StaticInformation/MonthlyNCPI/NCPIInfo2022E>