

A Look into the Past, the Present and the Future

By A.T.Ariyaratne

www.sarvodaya.org

With Gratitude and Appreciation...

On behalf of our sisters, brothers and children affected by the tsunami disaster and those of us who stood in solidarity with them I extend to all of you our love and heartfelt thanks for all the spiritual, moral, financial and in kind support you have given to Sarvodaya so far and are expecting to give in the future.

We acknowledged by letters written to you along with official receipts all your remittances except of those whose addresses could not be traced. Even these we acknowledged through e-mails and posted all donations on the website. If we have inadvertently missed any one of you please send an e-mail to check with us. We will immediately respond to you.

Yesterday we posted what Sarvodaya has done so far in great detail holistically as well as district by district, on the web. The next report will be the 5R activities which we are continuing to carry out village by village alongside the programs that are implemented sector by sector as given in our 12 point integrated plan. Special projects funded by governments, UN agencies, World Bank, Foundations and other funding agencies, if and when they support us, will be accepted, implemented, reported and accounted for as they come. Now we are ready to submit specific projects if you are prepared to fund them.

For us in Sarvodaya, Tsunami is an opportunity for sacrifice, learning, hard work and spiritual awakening. Though most of our full-time workers and thousands of volunteers from unaffected areas worked around the clock taking a lot of risks and undergoing hardships, none of them demanded additional salaries or extra payments for overtime work. Neither did they seek any cheap publicity or recognition for their work. They only shared the sufferings and woes of those who lost their loved ones and everything they had. They helped to satisfy their immediate basic physical, psychological and social needs and in return got a dispassionate joy of living and serving in the true Sarvodaya spirit.

We stretched our administrative capacity to the fullest using our already available manpower thus keeping our administrative costs to the minimum. So we were able to save your donations for mid-term and long-term real personality-, family- and community awakening activities. We are busy doing water and sanitation,

health and nutrition, and such other activities and from next week we will get into permanent house construction and community building.

Compared to the government and rich international organizations who received big grants, we have received smaller donations from a larger number of people in the world. However our spirits are very high and we strongly believe as time passes our contribution will be recognized by sympathetic, right thinking and generous human beings and organizations and come to our help to help the affected people in 226 villages to begin with and finally 1000 village communities in all surrounding them during a three to five year period. Our desire is to get these villages integrated into the 15000 Village Development Program which is already being implemented by Sarvodaya, the approach being primarily based on Self-Reliance and Community Participation in their own self-development.

An Integrated Approach to Reawakening

The following twelve sectors have to be implemented in an integrated way to realize our final objective of reawakening these village communities.

1. Women, Children and Orphans

- Establishment of Pre-Schools
- Nutrition and Health Care
- Conduct of Mental Health Development Programs for Pregnant Mothers
- Conducting Psycho-Social Healing Programs for Needy Children
- Preschool Children's Training
- Conduction of Children's Camps
- Awareness programs for mothers in household management
- Psycho-Social healing programs
- Provision of educational and recreational material for children
- Organized Excursions

2. Water and Sanitation

Principally through the Sarvodaya Rural Technical Services Unit:

- Purification of drinking wells
- Repair of damaged wells
- Construction of new wells
- Construction of temporary latrines

3. Health and Preventative Care

Through Sarvodaya Community Health Services and Sarvodaya Women's Movement:

- Persuade affected people to boil water
- Promote awareness of primary health care
- Educate on personal hygiene
- Promote a balanced diet
- Conduct of health clinics
- Conduct of disease prevention programs

4. Camp/Community Management

Principally through Sarvodaya Shanti Sena Movement:

- Meeting the requirements of camp residents (food, water, clothes, medicine, etc)
- Establishment of temporary preschools
- Conducting spiritual programs for children
- Meeting educational requirements of children
- Self-governance of camps

5. Environmental Management and Ecology

Principally through Sarvodaya Shanti Sena Movement (Peace Brigades) conduct programs for:

- Clearing the area of polythene material
- Cleaning drainage systems
- Motivate people to keep the surroundings clean
- Tree replanting and soil conservation
- Environmental and Ecological Education

6. Psychological and Spiritual Healing

Principally through Sarvodaya International Peace and Meditation Centre – Vishva Niketan:

- Conduct of counseling programs
- Conduct of spiritual programs

7. Housing and Resettlement

Principally through Sarvodaya Rural Technical Services carry out:

- Construction of new houses
- Repair of damaged houses
- Supply of kitchen utensils
- Supply of garden tools and seed material.

- Cleaning of dwellings and surroundings
- Environmental conservation programs

8. Livelihood Support, Trade, and Micro-Finance

Principally through Sarvodaya Economic Enterprise Development Service Unit conduct following activities:

- Management of training to maintain economic equilibrium
- Identification of self-employment projects and training
- Provision of loan facilities on easy payment terms
- Training in entrepreneurship
- Conduct of awareness programs on savings and credit schemes

9. Disaster Management and Mitigation

- Educating the people on measures to be taken in a crisis situation
- Collection and maintenance of crisis-relevant data
- Training of First-Aid and Services Teams
- Establishment of a Coordinating Network to link all levels from the grassroots up.

10. Communication

Principally through Sarvodaya IT Units:

- Establishment of a grassroots-up network
- Network facilities to facilitate instant information exchange
- Internet connections from the village to the national level

11. Documentation and Legal Assistance

Assisting the people through Sarvodaya Legal Services Movement to get back their national identity cards, birth-, marriage- and death certificates, deeds of properties, school certificates etc.

12. Integrated Village Awakening

All these 226 villages and later with the adjoining villages we may be working in around 1000 villages (904). As the reconstruction program develops we will get the villages to go through the normal Sarvodaya development programs which have five phases. The stages build infrastructure at the psychological, social, legal, economic, and technological levels.

Sarvodaya's strategy for relief, rehabilitation, reconciliation, reconstruction and reawakening will operate at 3 different levels:

1. At the level of the village/community: Sarvodaya is currently active in 226 tsunami-affected villages. The plan is to link each village with 3 other tsunami-affected villages, taking the total number of villages to 904.
2. At the level of the organization: Sarvodaya will internally reorganize, and develop systems and capacity to deal with the problems on hand.
3. At the level of national policy: Sarvodaya intends to take a lead role in informing and influencing policy decisions on tsunami-related issues. Sarvodaya will take up those issues that pertain specifically to the welfare of the people.

To act effectively, efficiently and compassionately at all these levels, Sarvodaya has identified the above 12 cross-cutting areas of focus, which Sarvodaya already has experience in.

In each of these areas of action, Sarvodaya will systematically carry out the following steps:

1. Assessment of needs.

These needs, once again, are at 3 levels: village, organizational and national policy. At a village level, we will evaluate the social, economic, and psycho-spiritual needs of the people. At an organizational level, we will rigorously and honestly evaluate our strengths and weaknesses, and identify capacity building needs within all levels of the organization. At a national level, we will remain apprised and involved in the policy process, and attempt to influence it in ways that places the social, economic, and psycho-spiritual needs of the people above all else. Assessing what these needs are will be a substantial information gathering and analysis effort, supported by the establishment of a management information system.

2. Identification of appropriate techniques, technology, tools and materials available to meet these needs.

For every area of action, Sarvodaya will endeavor to use, or develop state-of-the-art systems. This does not necessarily mean the most technically advanced, but rather the most locally appropriate, in terms of utility, social and environmental sustainability, costs, and aesthetics.

3. Elucidate and adhere to Sarvodaya's philosophical position on the 5R program.

This position will place the social, economic, and psycho-spiritual welfare of the people at its core, and above all else. However, these people include not only those affected by the tsunami, but other poor people in the country as well. Sarvodaya will not support the

Funds already committed for Housing, Water & Sanitation and Psycho- Social Healing Activities

District	No. of Villages	Name of Villages	Activites					Donors	Amount - Rs.
			Water & Sanitation						
			Houses	Toilets - Conts./Repairs	Wells	Compost	Water Tank	Psycho-Social Healing	
Kalutara	1	Katukurunda	56						
Jaffna	1		20					AGNT	25 M
Trincomalee	2	Gopalapuram	37						
		Kalawanchikulam	22						
Galle	2	Brahmanawatta	27						
		Mohottiwatta	15					Holcim	65 M
Matara	3	Kottegoda	12						
		Beliwatta	10						
		Suduwella	20						
Batticaloa	1		22						
Galle	1	Venamulla	44					SUA/Newz.	20 M
Galle	1	Malawenna	42					Australia	20 M
Galle	24			593	519	122	1212		
Hambantota	13			451			951		
Ampara	3			150		14	150		
Kalmunai	0								
								USAID	175 M
Ampara	2							*	
Galle	10							*	
Hambantota	4							*	
Kalmunai	4							*	
								AJDC	20 M
Batticaloa	1	Vakarai	304					*	
Trincomalee	1	Sumedagama	100					*	
Kalmunai	1	Marudamunai	310					*	
Total			1041	1194	519	136	2313		673 M

Holcim Hoclum Tidal Wave Reconstruction Fund
SUA/Newz. Sri Lankan United Association of New Zealand
AJDC American Jewish Distribution Committee
Austria Austrian Study Centre for Peace and Conflict Resolution
USA AGNT – Association for Global New Thought
Australia Australia (Perth) Sri Lankan Group

For those who have made donations above a certain amount, such as Rs. 20 Million (\$200,000), and committed to raise more funds on a continuing basis, we have allocated, e.g., the following housing schemes. At the site we will have a plaque to commemorate their donation. They can have continuing relationships with this village. Others who wish to do the same are requested to get in touch with us.

Those who cannot afford that amount of money, are also informed that that they can identify themselves with a smaller project in a village, which will also be acknowledged as above. For example:

No.	Description	Amount SL Rs.
1	Cost of Well	60,000.00
2	Well Pump & Bucket	100,000.00
3	Well Pump & Elevated Tank	225,000.00
4	Rain Water Harvesting Tank	40,000.00
5	Solar Panel with 5 bulbs	45,000.00
6	Tool Kits per kit	
	a) Masonry Tool Kit	7,500.00
	b) Carpentry Tool Kit	7,500.00
	c) Electrician kit	9,000.00
	d) Plumbers kit	8,000.00
7	Pre-school building cost	500,000.00
8	Common Hall Building cost	400,000.00
9	House 550 sq.ft	495,000.00
10	Cement Block Making Machine	60,000.00
11	Building & Bakery Machinery	500,000.00
12	Religious Place of Worship	
	Repair Cost	
	a) Damaged building	250,000.00
	b) New building	600,000.00

I hope you get an idea of where we are now and in which direction we are going in our tsunami relief, rehabilitation, reconciliation, reconstruction and re-awakening activities. Please follow our website and spare some time to be connected with us.

May you be well and happy!

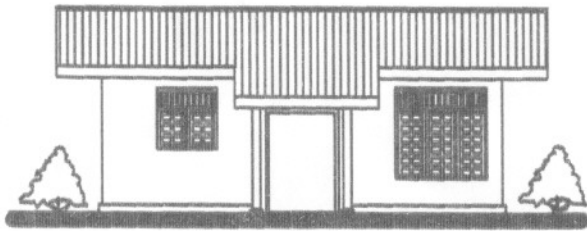
Attached Documents:

- Damage Assessment of Sarvodaya Villages
- Blueprint of House
- Blueprint of Wells
- Blueprint of Rain Water Harvesting Tank

Tsunami Affected Sarvodaya Villages in District Level*

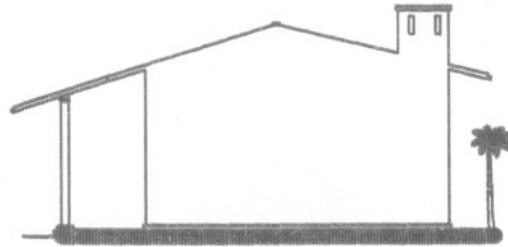
District	No. of Villages	Total family	Total population	Affected families	Affected population	Deaths	Damaged house (full)	Damaged house (partially)	Common Buildings	Damaged Toilets	Damaged Wells
Galle	30	13,724	65,420	8,306	43,420	1406	2,174	1,974	17	1,009	122
Matara	26	3,169	15,845	2,506	90,735	242	704	731	6	N/A	N/A
Kalmunai	35	11,059	55,295	8,290	3,709	42	5,251	886	120	N/A	N/A
Kalutara	26	12,226	53,061	5,050	24,792	28	1,492	1,345	4	2,041	36
Hambantota	19	11,162	34,160	3,171	12,260	2,769	1,178	850	53	393	N/A
Trincomalee	40	13,975	68,875	13,617	N/A	N/A	3,635	2,636	39	N/A	N/A
Colombo	4	359	1795	165	N/A	N/A	129	35	1	N/A	N/A
Ampara	3	1,370	4,800	260	867	1	6	31	N/A	150	11
Gampaha	6	6,038	30,190	1,377	N/A	N/A	212	855	N/A	N/A	N/A
Jaffna	5	2,104	10,520	1,364	2,170	29	284	552	N/A	N/A	N/A
Batticaloa	21	6,844	26,162	4,208	16,386	309	2,432	1,066	N/A	N/A	N/A
Kilinochchi	5	N/A	N/A	N/A	N/A	N/A	N/A	N/A	N/A	N/A	N/A
Mullaitivu	5	N/A	N/A	N/A	N/A	N/A	N/A	N/A	N/A	N/A	N/A
Puttalama	1	N/A	N/A	N/A	N/A	N/A	N/A	N/A	N/a	N/A	N/A
TOTAL	226	82,030	366,123	48,314	194,339	4,826	17,497	10,961	240	3,593	169

* These figures are a result of Sarvodaya's surveys, up to date.



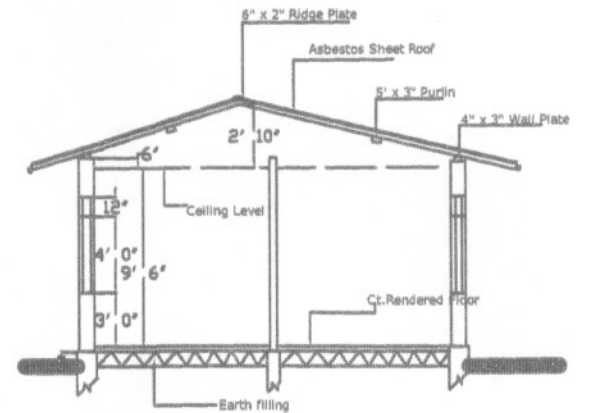
FRONT ELEVATION

Scale 1:8



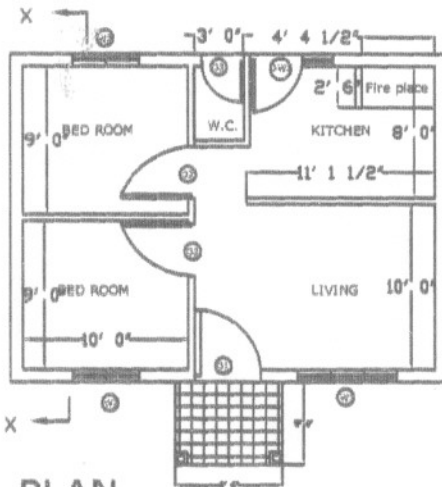
SIDE ELEVATION

Scale 1:8



SECTION X-X

Scale 1:8

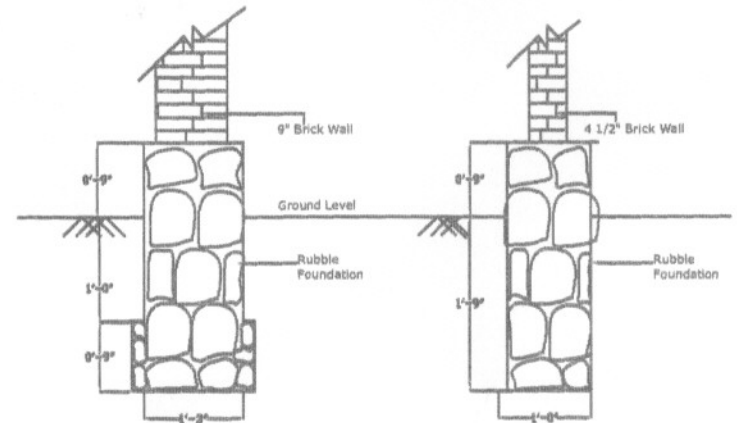


PLAN

Scale 1:8

Floor Area 557 sq.ft

SCHEDULE OF DOORS & WINDOWS			
TYPE	SIZE	DESCRIPTION	Nos.
D1	4' 0" X 7' 0"	Flush panelled door with 1' 0" high slats on top	01
D2	3' 2" X 7' 0"	Plywood door	02
D3	2' 6" X 7' 0"	- Do -	01
DW1	3' 2" X 7' 0"	- Do - With 1' 0" high slats on top	01
	2' 0" X 6' 0"	Glazed window	01
W1	6' 0" X 6' 0"	Glazed window - Do -	01
W2	4' 0" X 4' 0"	Glazed window - Do -	01

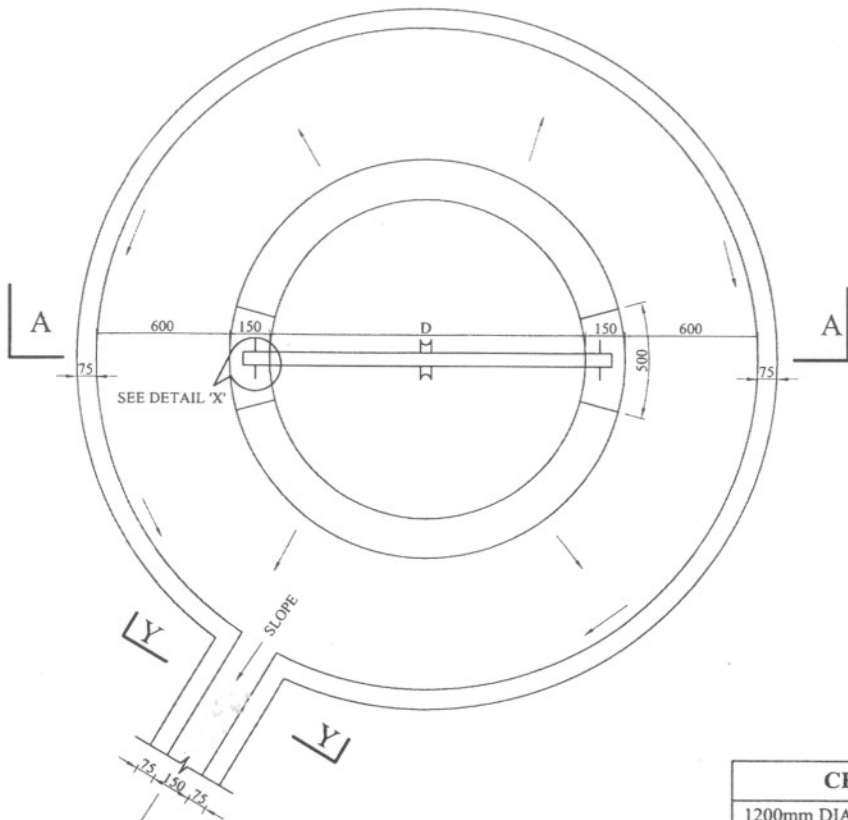


FOUNDATION DETAIL

Scale-2:1

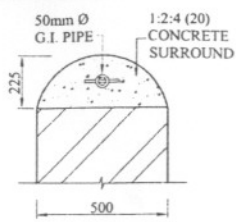
FOUNDATION DETAIL

Scale-2:1

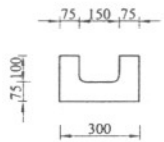


PLAN

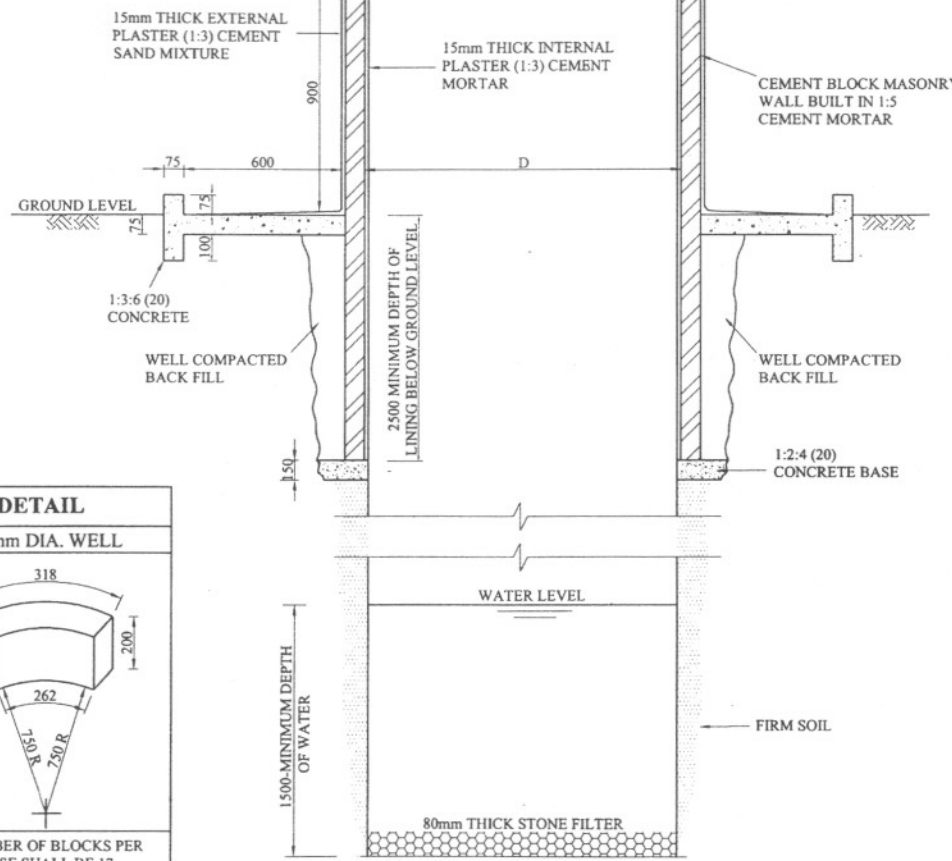
TO A NATURAL DRAIN OR A SOAKAGE PIT AS APPROPRIATE. LENGTH SHALL NOT BE LESS THAN 1.5m



DETAIL AT 'X'



SECTION Y-Y



SECTION A - A

CEMENT BLOCK DETAIL					
1200mm DIA. WELL			1500mm DIA. WELL		
NUMBER OF BLOCKS PER COURSE SHALL BE 15			NUMBER OF BLOCKS PER COURSE SHALL BE 17		
No. OF BLOCKS FOR HEAD WALL & COLUMNS IS 69			No. OF BLOCKS FOR HEAD WALL & COLUMNS IS 77		
MORTAR MIX. FOR CEMENT BLOCKS SHALL BE 1:8 (CEMENT :SAND)					

SCHEDULE OF MATERIAL AND LABOUR

ITEM	UNIT	1200 mm inside diameter		1500 mm inside diameter	
		Lined depth 2.5m below GL	Additional unlined depth per metre	Lined depth 2.5m below GL	Additional unlined depth per metre
MATERIAL					
Cement (50 Kg)	Bag	20	-	25	-
Sand	Cu m	04	-	05	-
20mm Metal	Cu m	0.70	-	0.80	-
50 mm dia GI pipe	m	1.50	-	1.80	-
6 mm Mild steel rod	m	0.40	-	0.40	-
100 mm dia pulley	No	01	-	01	-
LABOUR					
Mason	Day	10	-	12	-
Unskilled labour	Day	28	02	30	03

**PARTLY LINED WELL
CEMENT BLOCK MASONRY
(1200mm & 1500mm Diameters)**

AUTOCAD <i>R.D.V.S.A FOUYSKA</i>	DESIGNED NEIL HERATH	DRG. No. HSL / W / 01
SCALE 1:20, 1:10	DATE NOV. 2001	

Bubble Shaped Ferro cement Rain Water Harvesting Tank

5 m³ Capacity

